

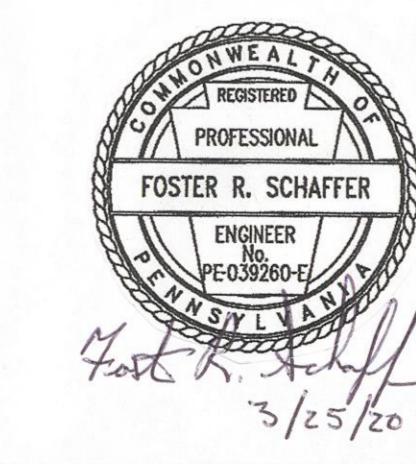
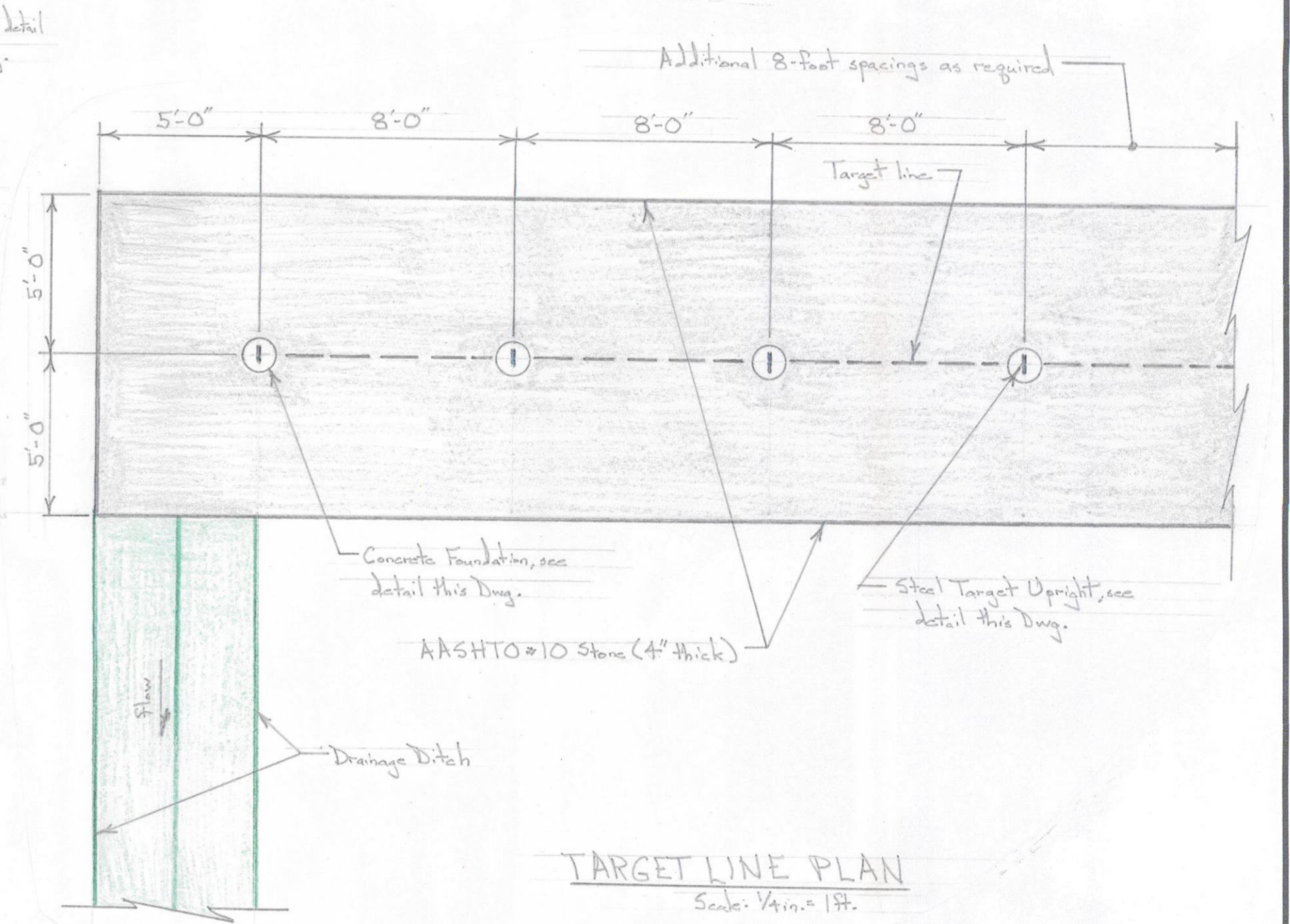
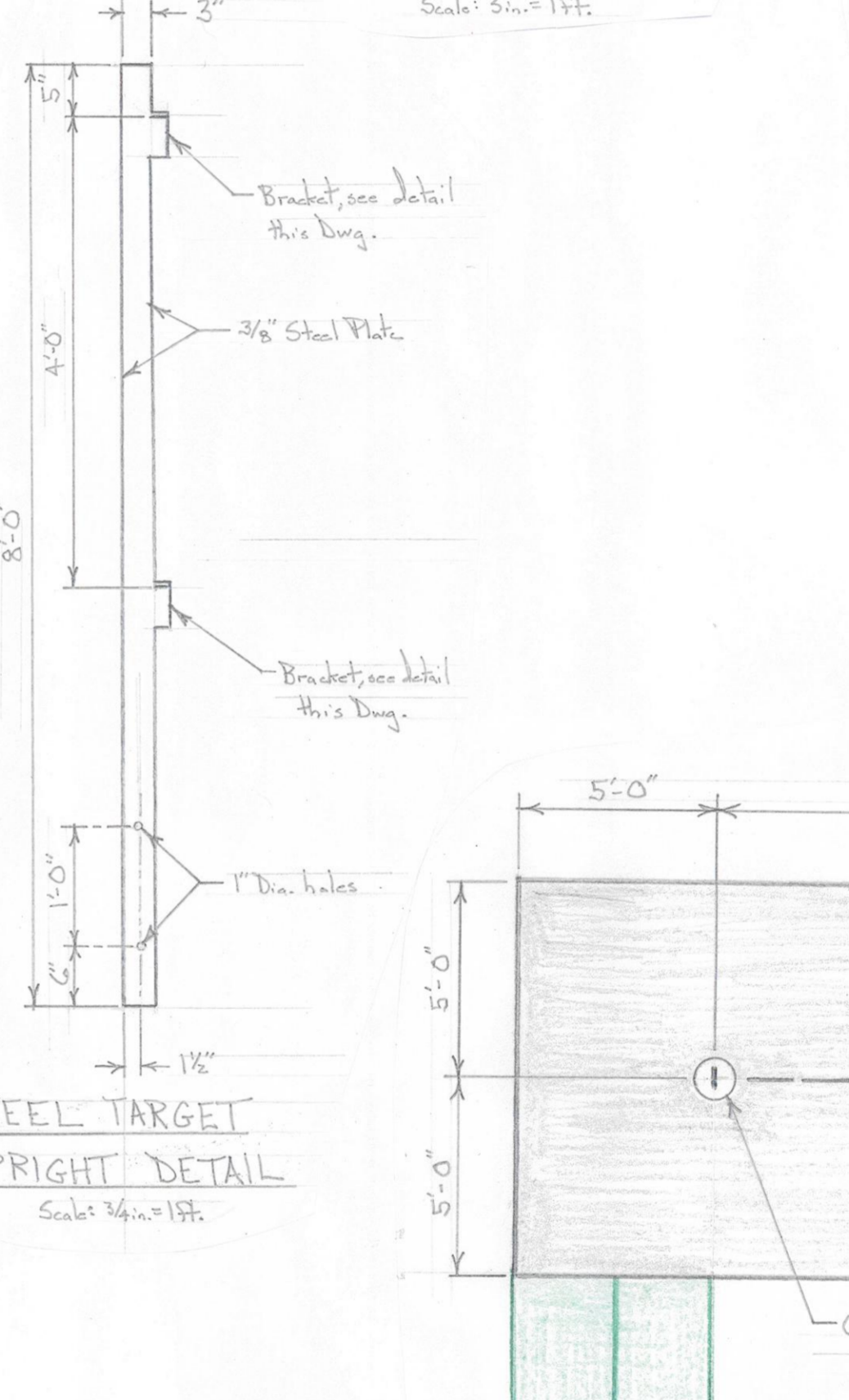
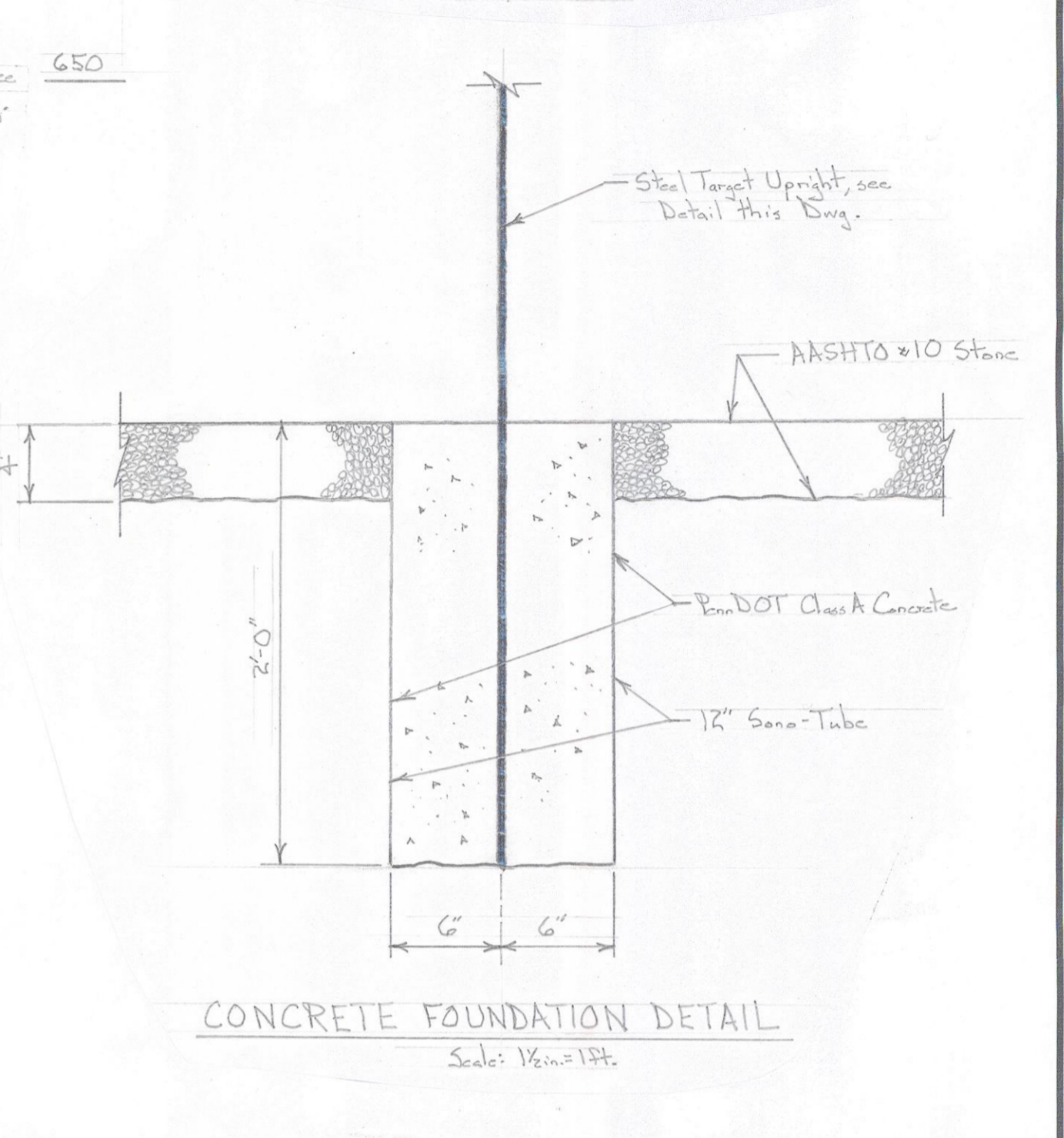
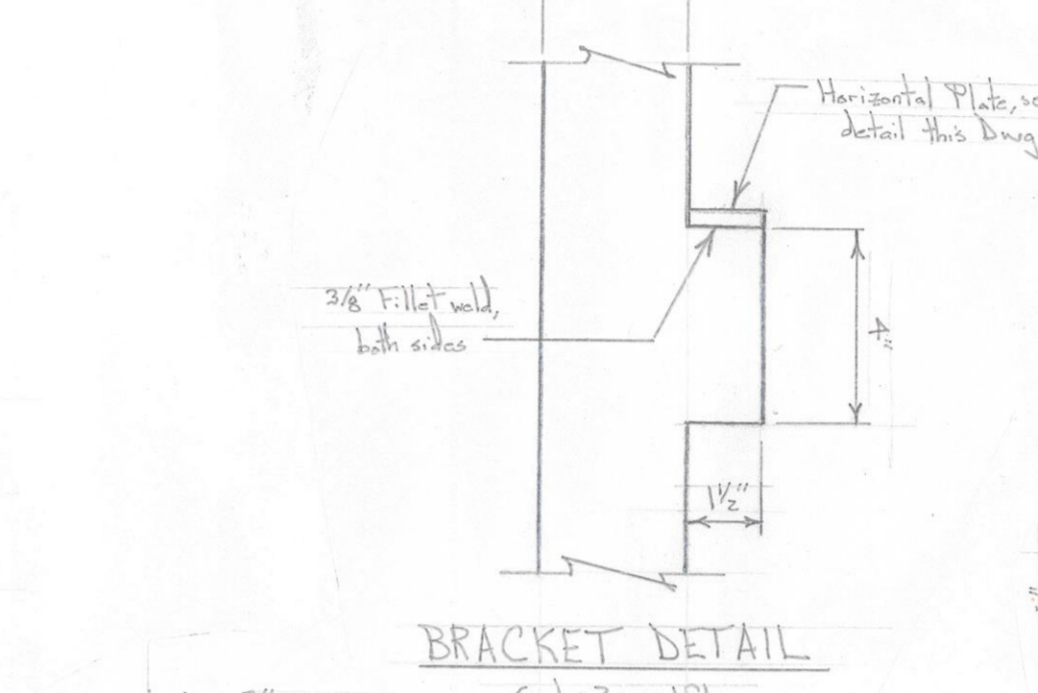
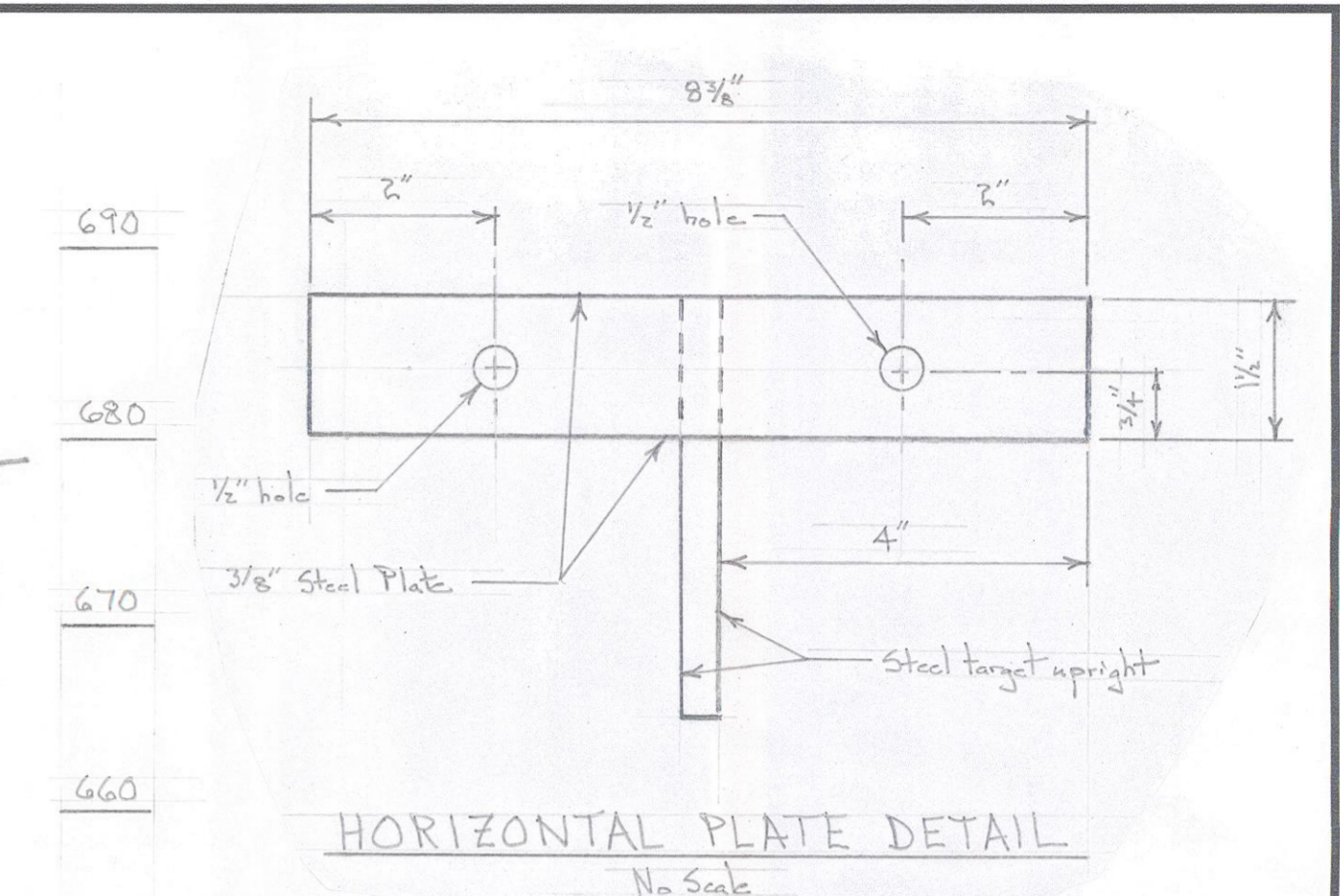
TABLE 4.1
Composite Sock Fabric Minimum Specifications

Material Type	3 mil HDPE		5 mil HDPE		Multi-Filament Polypropylene (MFPP)		Heavy Duty Multi-Filament Polypropylene (HMFPP)	
	Photo-degradable	Biodegradable	Photo-degradable	Biodegradable	Photo-degradable	Biodegradable	Photo-degradable	Biodegradable
Mesh Opening	12"	12"	24"	24"	24"	24"	24"	24"
Mesh Diameter	18"	24"	24"	36"	36"	36"	36"	36"
Mesh Opening	3/8"	3/8"	3/8"	3/8"	3/8"	3/8"	3/8"	3/8"
Tensile Strength	25 psi	25 psi	44 psi	44 psi	202 psi	202 psi	202 psi	202 psi
UV Stability % (ASTM G-155)	23% at 1000 hr	23% at 1000 hr	100% at 1000 hr	100% at 1000 hr	100% at 1000 hr	100% at 1000 hr	100% at 1000 hr	100% at 1000 hr
Functional Longevity	6 months	9 months	1 year	2 years				

TABLE 4.2
Composite Standards

Organic Matter Content	50% - 100% (by weight basis)
Fibrous and particulate	5.0 - 8.0
Moisture Content	20% - 30%
Particle Size	90% pass through 1" screen
Soluble Salt Concentration	0.5 grains (milligrams) Maximum

- EROSION & SEDIMENTATION CONTROL NOTES**
- An E&S Permit is not required for this project; however, the Contractor shall notify the Clinton County Conservation District at 570-726-3798 at least 7 days prior to work commencing at the site.
 - Additional requirements to adequately control erosion and sedimentation shall be the responsibility of the Contractor and shall be considered incidental to the earthwork required for the project.
 - Apply seeding, soil supplements and mulch in accordance with Section 10 of the Technical Specifications.
 - Disturbed earth is considered stabilized when a uniform 70% perennial vegetative growth is established over the entire area.
 - Upon completion or temporary cessation of any earth disturbance activities, or any stage thereof, the disturbed area shall be immediately stabilized.
 - The silt sock must be placed along the uphill side of the existing drainage ditch prior to any earth disturbance at the site. The total length of the silt sock is 200-feet. Turn the ends of the silt sock uphill. Inspect the silt sock weekly and after any runoff event. Immediately clean, repair or replace section of silt sock in unsatisfactory condition. Remove accumulated sediment when it reaches one-half (1/2) the above ground height of the silt sock.
 - Seed disturbed areas at the new range with PennDOT Formula B and Formula C seed mixes. Formula B shall be used on the range floor and other flat areas that will be mowed in the future. Formula C shall be used on the slopes of the backstop and sideburn embankments.
 - After final site stabilization has been achieved, temporary erosion and sedimentation BMPs must be removed. Areas disturbed during removal of the BMPs must be stabilized immediately.
 - Until the site is stabilized, all erosion and sedimentation BMPs must be properly maintained. If erosion and sedimentation control BMPs fail to perform as expected, replacement BMPs or modifications of those installed will be required.



PENNSYLVANIA GAME COMMISSION
STATE GAME LANDS # 295 | BEECH CREEK TWP. | CLINTON CO.
LAW ENFORCEMENT SHOOTING RANGE
SECTIONS AND DETAILS

REVISIONS	PROJECT NO.	PGC-295-20-01
▲	DRAWN BY:	LS
▲	DATE:	3/25/20
▲	SHEET NO.	2 OF 2